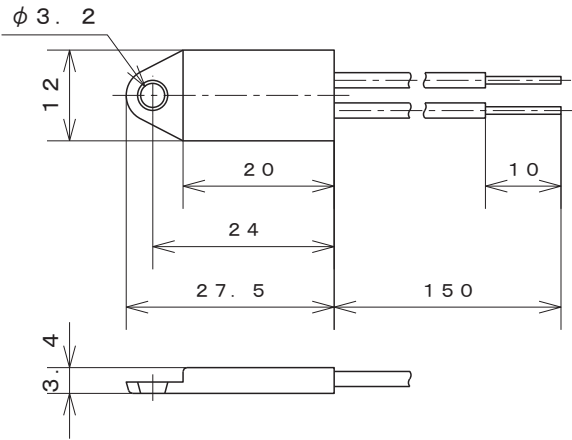




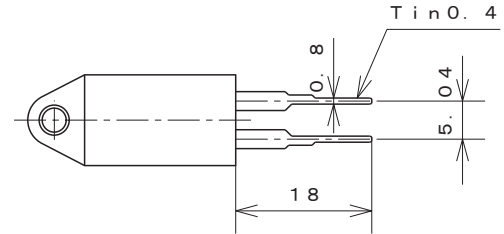
Small & Thin  
Drip-proof Type Automatic Reset  
PCB on board Type

Type **SS1**

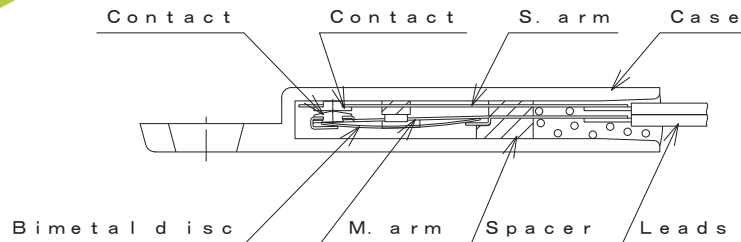
Dimensions



PCB on board type



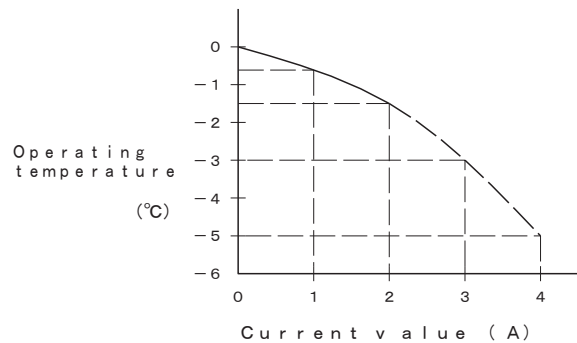
Structure



Materials of parts

Part	Material
Case	Polybutylene terephthalate
M. arm	Beryllium copper
Leads	PVC 0.3mm <sup>2</sup> , tin plated Brass
Contacts	Silver-Nickel alloy

Drift of operating temperature by current value when contact close



Specification

Item	Specification
1. Basic features	SPST Automatic reset
2. Operation	L : Contacts open on temperature rise F : Contacts close on temperature rise
3. Electrical rating	AC250V/3A
4. Calibration method	Hot & cold air circulation system
5. Temperature rating	Operating temperature Max. 105°C
6. Insulation resistance	Not less than 1,000MΩ/DC500V
7. Dielectric strength	Not less than AC1,500V/1min. or AC1,800V/1sec.

Standard

UL 60730, C-UR      UL File No. E201152      AC250V/3A